




All Saints

Church of England Primary Croydon

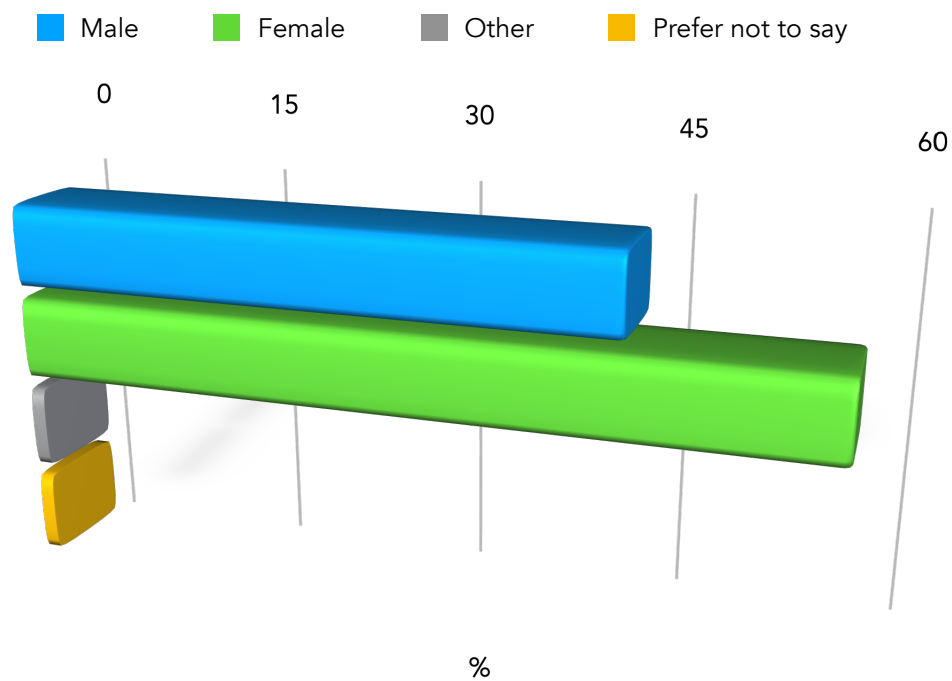
All Believing, All Achieving



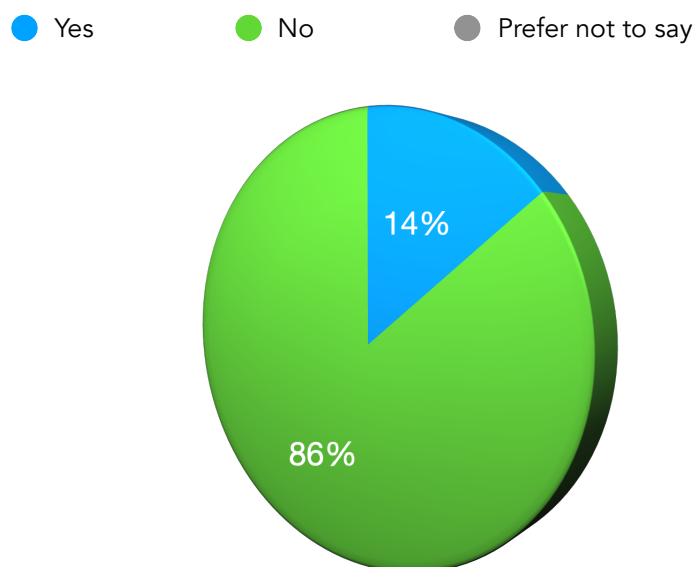
GOVERNORS' DIVERSITY MONITORING

April 2023

Gender

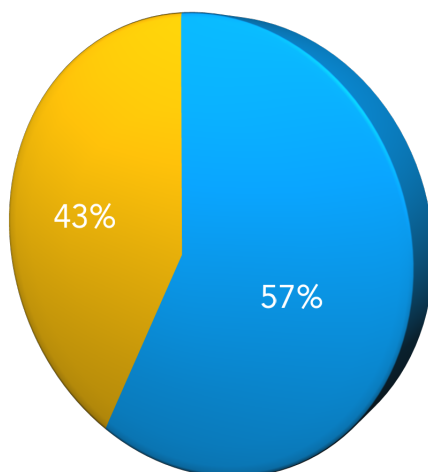


Disability



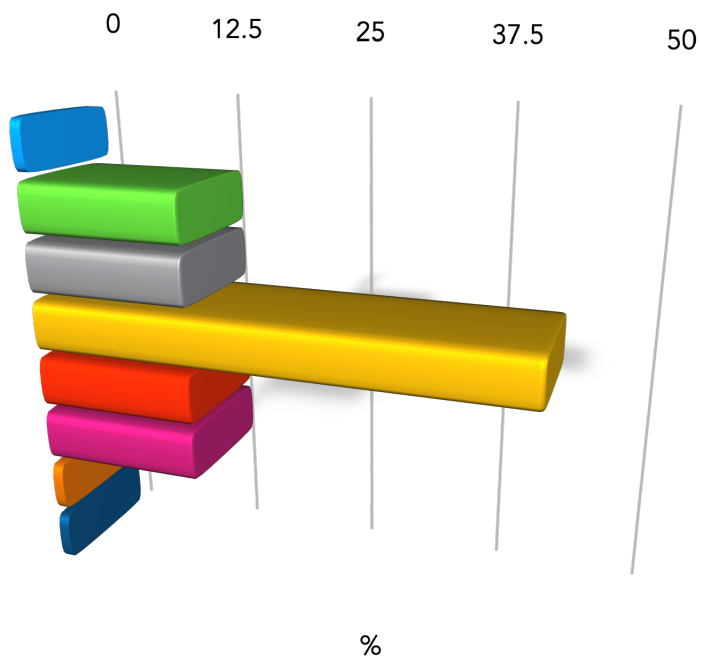
Ethnicity

● White
 ● Mixed
 ● Asian
 ● Black
 ● Arab
 ● Other

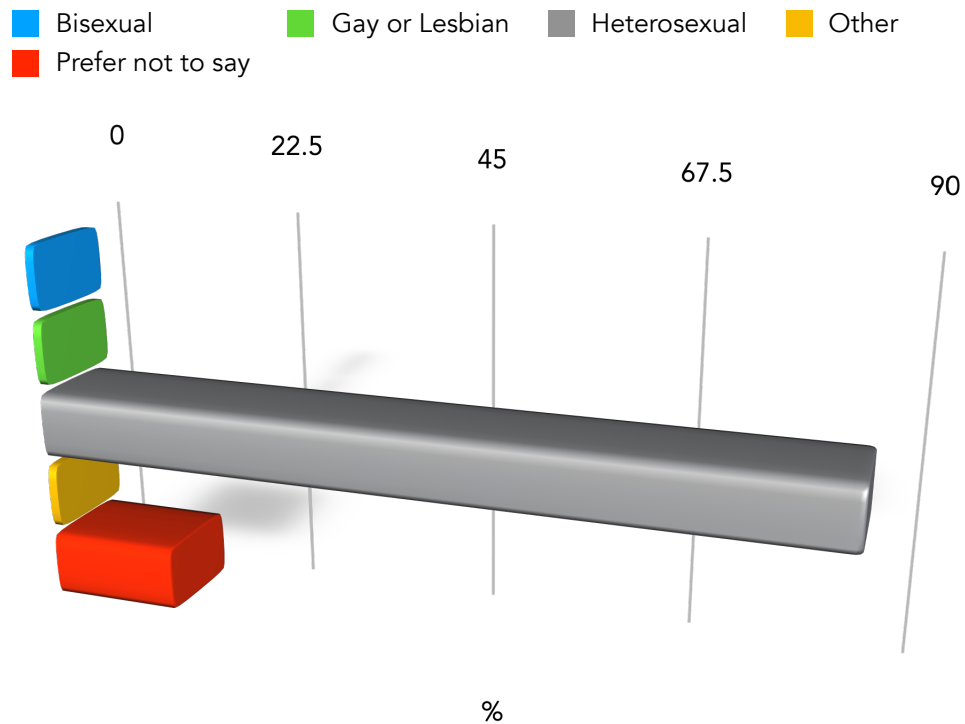


Age

■ 18-24
 ■ 25-34
 ■ 35-44
 ■ 45-54
■ 55-64
 ■ 65-74
 ■ 75 and over
 ■ Prefer not to say



Sexual Orientation

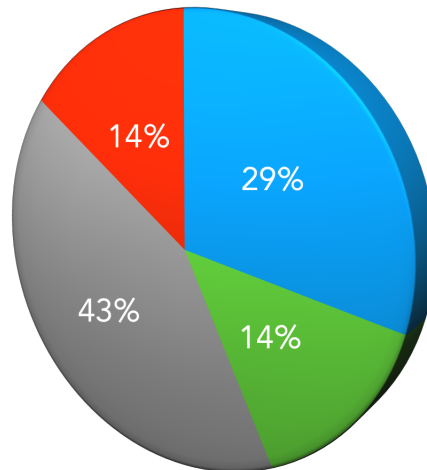


Religion or belief



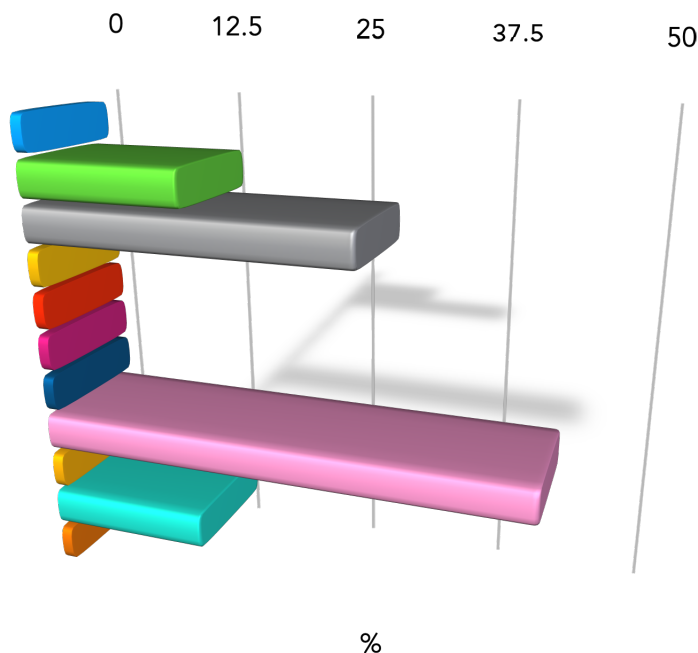
Professional Background

- Mostly Civil Service
- Mostly Private Sector
- Mostly Wider Public Sector
- Mixed
- Other
- I prefer not to say



Type of work

- A ■ B ■ C ■ D ■ E ■ F
- G ■ H ■ J ■ K ■ L



- A = Clerical and intermediate occupations e.g. secretary, personal assistant, nursery nurse, office clerk, call centre agent
- B = Middle or junior managers e.g. office manager, warehouse manager, restaurant manager
- C = Modern professional occupations e.g. teacher, nurse, social worker, artist, musician, software designer
- D = Routine manual and service occupations e.g. van driver, cleaner, porter, waiter/waitress, bar staff
- E = Semi-routine manual and service occupations e.g. postal worker, security guard, machine worker, receptionist, sales assistant
- F = Senior managers and administrators e.g. finance manager, chief executive
- G = Technical and craft occupations e.g. fitter, plumber, printer, electrician
- H = Traditional professional occupations e.g. accountant, solicitor, scientist, medical practitioner
- J = Long-term unemployment e.g. claimed Jobseeker's Allowance or earlier unemployment benefit for more than a year
- K = This question does not apply to me
- L = Prefer not to say